



1626 Balltown Road  
 Niskayuna, New York 12309  
 Phone: (518) 382.2511  
 Fax: (518) 382.2529  
 CEEB code: 335110

# 2008-2009 PROFILE

# Niskayuna High School

Niskayuna Central School District **A National School of Excellence**

*Administration:* Dr. Kevin S. Baughman, Superintendent  
 Dr. Deborah Shea, Assistant Superintendent  
 for Educational Programs & Instruction  
 John W. Rickert, Principal  
 Amy DuFort, Assistant Principal  
 Rebecca Gleason, Assistant Principal  
 Mark Treanor, Assistant Principal  
 Gloria A. Jean, Director of K-12 Counseling

*Counselors for Grades 10-12:*  
 Nancy Bushee, nbushee@niskayschools.org  
 David Motta, dmotta@niskayschools.org  
 Kristen Neary, kneary@niskayschools.org  
 Leah Wertz, lwertz@niskayschools.org

*Counselors for Grade 9:*  
 Kate Carroll, kcarroll@niskayschools.org  
 Karl Swisher, kswisher@niskayschools.org

## The School and Community

Niskayuna is a suburban community with an approximate population of 20,500. It is conveniently located in the Albany, Schenectady, Troy metropolitan area.

While essentially a residential community, General Electric Global Research, Knolls Atomic Power Laboratory, the WRGB television studio, Environment One, and Schenectady International, Inc. are located within the district.

The community has long provided strong and consistent support to an effective and forward-looking educational program.

Niskayuna High School is a comprehensive public high school with a student population of 1,430 students in grades 9-12. Thirteen departments offer a rich variety of programs designed to meet the needs of a talented student population. Offerings include 47 honors and 15 AP classes, options for interdisciplinary study, and a broad range of electives. Twenty-two units of credit are required for graduation, including English (4), social studies (4), math (3), science (3), human ecology (1/2) and art/music (1).

Classes are offered in 78-minute blocks on alternate days. Seniors must carry a minimum of 5.5 credit hours.

## Distinctions

In 1983, the United States Office of Education named Niskayuna High School as a School of Excellence, one of 144 high schools identified in the nation-wide selection process. NHS was named one of the nation's top 10 high schools by the School Match Service and ranked one of the top 400 high schools in the country in a study commissioned by the U. S. Department of Education.

There are 120 faculty members at Niskayuna High School, over 90% of whom hold advanced degrees.

## Class of 2008

### Post High School Plans

Four-year college or university	72%
Two-year college	21%
Military	1%
Employment	4%
Other	2%



## Honors & Advanced Placement

Students who demonstrate superior promise in English, social studies, science, math, foreign language, art and music may be recommended for honors or AP courses in one or more of these subjects. Students may also “self select” for these courses. A complete Program of Studies is available on the district Web site at [www.niskayunaschools.org](http://www.niskayunaschools.org).

### ADVANCED PLACEMENT EXAMS 2008

234 students wrote 425 exams ... 91% scored 3 or higher

Academic Area	Frequency of Scores					Total Written
	5	4	3	2	1	
Biology	14	8	1	0	1	24
Calculus AB	13	11	2	0	0	26
Calculus BC	17	3	1	0	0	21
Chemistry	11	7	3	0	1	22
Computer Science A	0	0	1	0	0	1
Computer Science AB	1	2	1	1	3	8
Economics Macro	11	15	11	4	1	42
Economics Micro	5	6	1	0	0	12
English Lang & Comp	18	32	32	17	1	100
English Lit & Comp	1	5	5	1	0	12
French Language	1	1	2	0	0	4
German Language	2	1	0	0	0	3
Gov't & Politics: U.S.	9	7	8	2	0	26
Music Theory	2	1	3	0	0	6
Physics B	1	1	2	1	0	5
Physics C (E&M)	0	0	0	0	1	1
Physics C (Mech)	1	3	1	0	0	5
Spanish Language	3	1	0	0	0	4
Statistics	10	9	6	1	0	26
U.S. History	23	14	8	1	0	46
World History	15	9	6	1	0	31
<b>TOTALS</b>	<b>158</b>	<b>136</b>	<b>93</b>	<b>31</b>	<b>7</b>	<b>425</b>

## Honors Courses

- English 9 Honors
- English 10 Honors
- English 10 Honors: World Connections\*
- English 11 Honors/AP
- SUPA English 12
- English 12 Honors/AP
- Global History I Honors, II Honors
- Social Studies 10 Honors: World Connections\*
- American History Honors
- Introduction to Political Science Honors
- Math 1 Advanced Honors
- Math 2 Advanced Honors
- Math 3 Honors
- Math 4 Honors
- Biology Honors
- Chemistry Honors
- Earth Science Honors
- Physics Honors
- French II Honors, III Honors, IV Honors, V Honors
- German Accelerated I/II, II Honors, III Honors, IV Honors, V Honors
- Latin Accelerated I/II, IV Honors, Latin AP\*
- Spanish II Honors, III Honors, IV Honors, V Honors
- Advanced Art Studio
- Advanced Jewelry
- Advanced Ceramics
- Advanced Studio in Video
- Advanced Studio in Computer Arts
- Advanced Photography
- Advanced Sculpture
- Symphonic Band
- Symphony Orchestra
- Music Theory II
- Concert Chorale
- Jazz Ensemble
- Chamber Strings
- Studio Singers
- Bel Canto Voices
- Orchestra Winds

## AP Courses

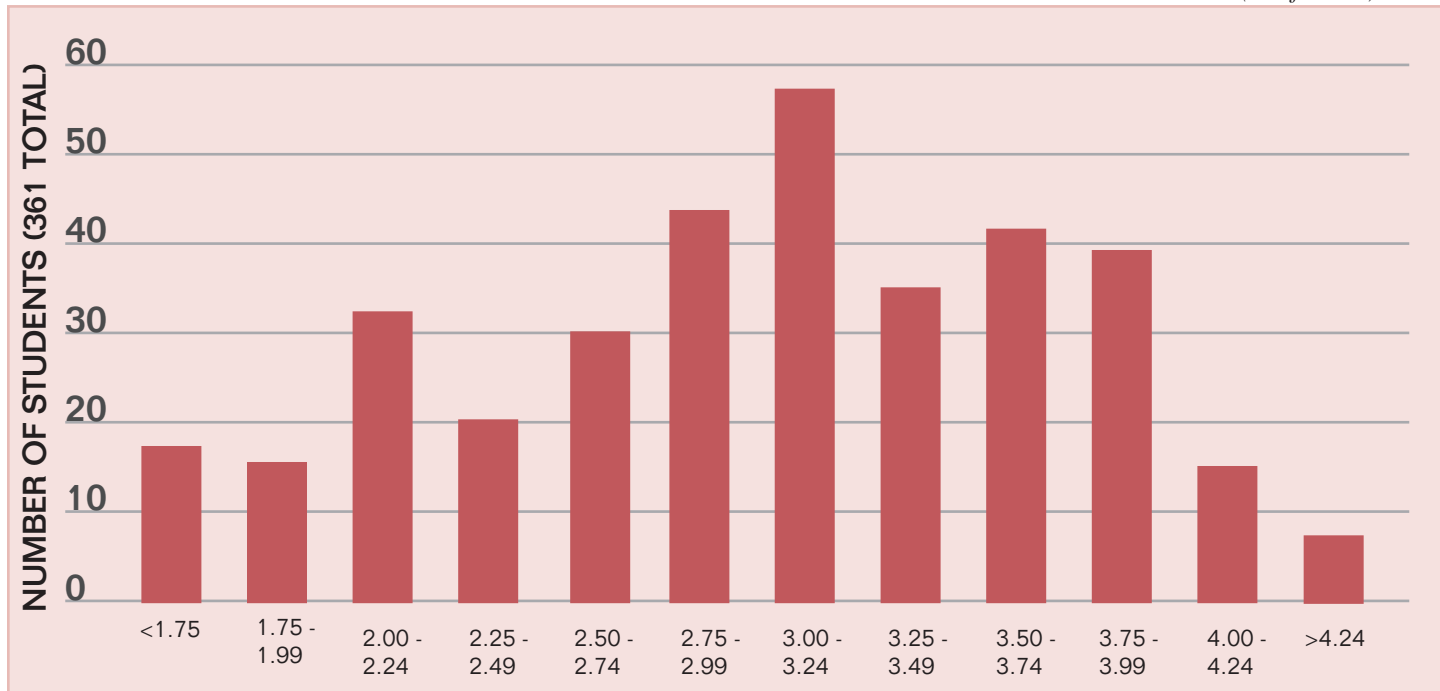
- AP English 11 Honors
- AP English 12 Honors
- AP Reading & Writing Prose\*
- AP American History
- AP Micro Economics
- AP Macro Economics
- AP Macro Economics & American Government
- AP American Government\*
- AP World History
- AP Computer Science AB
- AP Biology
- AP Chemistry
- AP Physics
- AP Latin\*
- AP Music\*
- AP Art\*
- AB Calculus
- BC Calculus
- AP Statistics

*\*not offered in the 2008-09 school year*

## Grading

Grades are “A+ through F,” including “+” and “-” grades for A, B and C, and an equivalent numerical scale has been defined in which an A+ equals 4.3. While there is no weighting of Honors or AP courses in the traditional sense, outstanding work in these courses is recognized with a grade of “H” (5 points), which is also used in computing the GPA. The GPA chart in this profile is based on six semesters of grades for this class.

### CLASS OF 2009 SIXTH SEMESTER CUMULATIVE G.P.A. DISTRIBUTION *(as of 07/08)*



## Mean Scores for 2007-08 Subject Tests

Subject	Number	Mean	Standard Deviation
Literature	18	626	
U.S. History	53	658	75
World History	19	665	
Math Level 1	43	651	64
Math Level 2	34	703	75
Biology — E	26	613	63
Biology — M	30	667	68
Chemistry	34	636	68
Physics	14	684	
Chinese—Listening	3		
French	5	620	
German	2		
German—Listening	3		
Latin	1		
Spanish	6	585	
Spanish—Listening	3		

## Niskayuna Average ACT scores – Three year trend

Year	# tested	English	Math	Reading	Science	Composite
2005-06	101	25.2	26.3	26.1	24.9	25.8
2006-07	119	25.0	26.4	25.7	25.0	25.6
2007-08	138	25.2	26.5	25.7	25.3	25.8

## 2007-08 SAT

	25th%ile	75th%ile
Critical Reading	490	640
Math	510	660
Writing	470	630

## NATIONAL MERIT SCHOLARSHIP PROGRAM

Number of Participants	253
Semifinalists	8
Letters of Commendation	21

## Colleges & Universities currently attended by Niskayuna graduates:

Albany College of Pharmacy	Grinnell College	Pennsylvania, University of	State University of New York,
American University	Grove City College	Philadelphia University	Plattsburgh
Amherst College	Hamilton College	Pittsburgh, University of	State University of New York, Potsdam
Arizona State University	Hartford, University of	Pratt Institute	State University of New York,
Bard College	Hartwick College	Princeton University	Purchase
Barnard College	Harvard College	Providence College	State University of New York,
Bates College	Hobart & William Smith Colleges	Quinnipiac University	Stony Brook
Baylor University	Hofstra University	Reed College	Stephen F. Austin State University
Bentley College	Holy Cross, College of the	Reinhardt College	Swarthmore College
Boston College	Hope College	Rensselaer Polytechnic Institute	Syracuse University
Boston Conservatory	Hunter College, CUNY	Rhode Island School of Design	Tennessee, University of
Boston University	Indiana University, Bloomington	Rhode Island, University of	Texas A&M University
Bowdoin College	Ithaca College	Richmond, University of	Toronto, University of
Brandeis University	James Madison University	Rider University	Towson University
Brigham Young University	Johns Hopkins University	Rochester Institute/Technology	Tufts University
Brown University	Johnson & Wales University	Rochester, University of	Tulane University
Bryant College	Keene State College	Roger Williams University	U.S. Coast Guard Academy
Bryn Mawr College	Kent State University	Rollins College	U.S. Military Academy West Point
Bucknell University	Kentucky, University of	Russell Sage College	U.S. Naval Academy
Canisius College	King's College, NY	Rutgers University	Union College
Carnegie Mellon University	Laboratory Institute of Merchandising	Sacred Heart University	Utah, University of
Case Western Reserve University	Lafayette College	Sage College of Albany	Utah Valley State College
Castleton College	Lasell College	Salve Regina University	Utica College
Cazenovia College	Lawrence University	Sarah Lawrence	Vanderbilt University
Central Connecticut State University	Lehigh University	School, Art Institute of Chicago	Vassar College
Champlain College	LeMoine College	School of Visual Art	Vermont, University of
Chapman University	Loyola College	Siena College	Villanova University
Chester College, New England	Macalester College	Simmons College	Virginia Polytech St. University
Chicago, University of	Maine, University of	Skidmore College	Wake Forest University
Clark University	Manhattan College	Smith College	Washington University, MO
Clarkson University	Marist College	Southern California, University of	Wentworth Institute/Technology
Coastal Carolina University	Marquette University	St. Anselm College	West Florida, University of
Colgate University	Maryland, University of	St. Benedict, College of	West Virginia University
Colorado, University of	Marymount Manhattan College	St. Bonaventure University	Western Connecticut State U
Columbia University	Massachusetts College of Art	St. John Fisher University	Western New England College
Concordia University	Massachusetts College of Liberal Arts	St. John's University	William & Mary, College of
Connecticut, University of	Massachusetts Institute Technology	St. Lawrence University	Williams College
Cornell University	Massachusetts, University of	St. Michael's College	Wingate University
Dartmouth College	McGill University	St. Mary's College, MD	Wisconsin, University of
Dean College	Mercyhurst College	St. Olaf College	Worcester Polytechnic Institute
Delaware, University of	Merrimack College	St. Rose, College of	
Delaware Valley College	Methodist College	Stanford University	
Dickinson College	Miami University Ohio	State University of New York, Albany	
Drew University	Michigan, University of	State University of New York, Alfred	
Drexel University	Michigan State University	State University of New York,	
Duke University	Middlebury College	Binghamton	
D'Youville College	Mount Holyoke College	State University of New York,	
Eastern University	Mount Ida College	Brookport	
Eckerd College	Nazareth College	State University of New York, Buffalo	
Elmira College	New England College	State University of New York, Canton	
Emerson College	New Hampshire Institute of Art	State University of New York,	
Emory University	New Hampshire, University of	Cobleskill	
Endicott College	New Haven, University of	State University of New York,	
Evergreen College	New York University	Cortland	
Fairfield University	Niagara University	State University of New York, Delhi	
Flagler College	North Carolina A & T University	State University of New York,	
Florida, University of	North Carolina State University	Environmental Science & Forestry	
Fordham University	North Carolina, University of	Fashion Institute/Technology	
Franciscan University	Northeastern University	State University of New York,	
Franklin Pierce College	Northwestern University	Fredonia	
Furman University	Northwestern Ohio, University of	State University of New York, Geneseo	
George Mason University	Norwich University	State University of New York,	
George Washington University	Notre Dame, University of	Morrisville	
Georgetown University	Old Dominion University	State University of New York,	
Georgia Institute of Technology	Oral Roberts University	New Paltz	
Gettysburg College	Pace University	State University of New York,	
Gordon College	Palm Beach Atlantic University	Oneonta	
Greensboro College	Pennsylvania State University	State University of New York, Oswego	

### COMMUNITY COLLEGES & TWO-YEAR PROGRAMS

Cape Fear Community College  
 Cayuga Community College  
 Community College of Philadelphia  
 Community College of Vermont  
 Dutchess Community College  
 Herkimer County Community College  
 Hudson Valley Community College  
 Mohawk Valley Community College  
 Onondaga Community College  
 Schenectady County Community  
 College  
 Suffolk Community College  
 Valencía Community College